



NVIDIA HOLODECK UPDATE

David Weinstein, August 15 2018

PROFESSIONAL DESIGN

High Bar for Accuracy and Realism

PHOTOREAL



DETAILED & ACCURATE



INTERACTIVE / DYNAMIC



VR IS REVOLUTIONIZING DESIGN

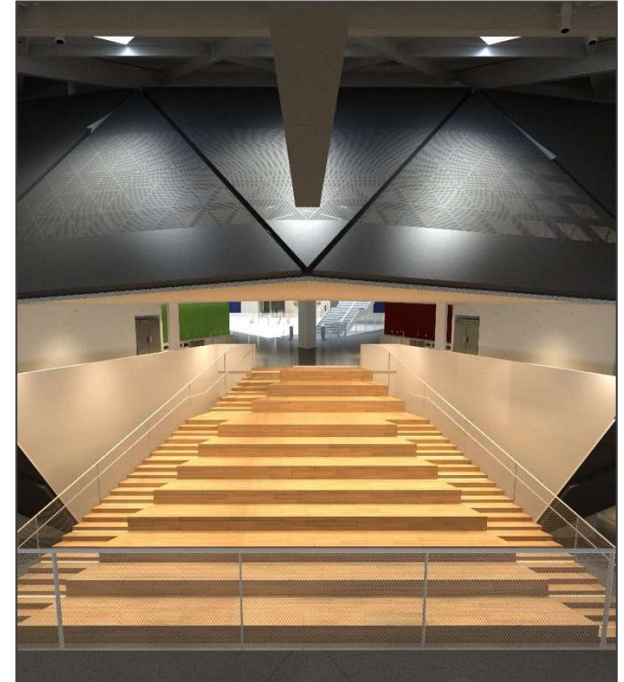
MEDIA & ENTERTAINMENT



MANUFACTURING & DESIGN



ARCH, ENGINEERING CONSTRUCTION



NVIDIA HOLODECK

Design Lab of the Future



PHOTOREALISTIC, COLLABORATIVE DESIGN PLATFORM

PHOTOREALISTIC
GRAPHICS



INTERACTIVE
PHYSICS



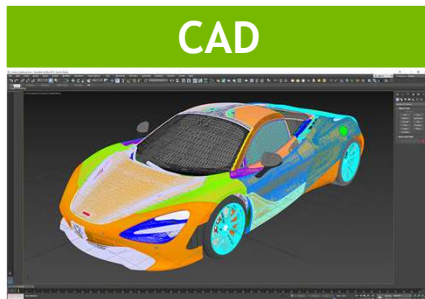
REAL-TIME
COLLABORATION



GPU-
ACCELERATED AI

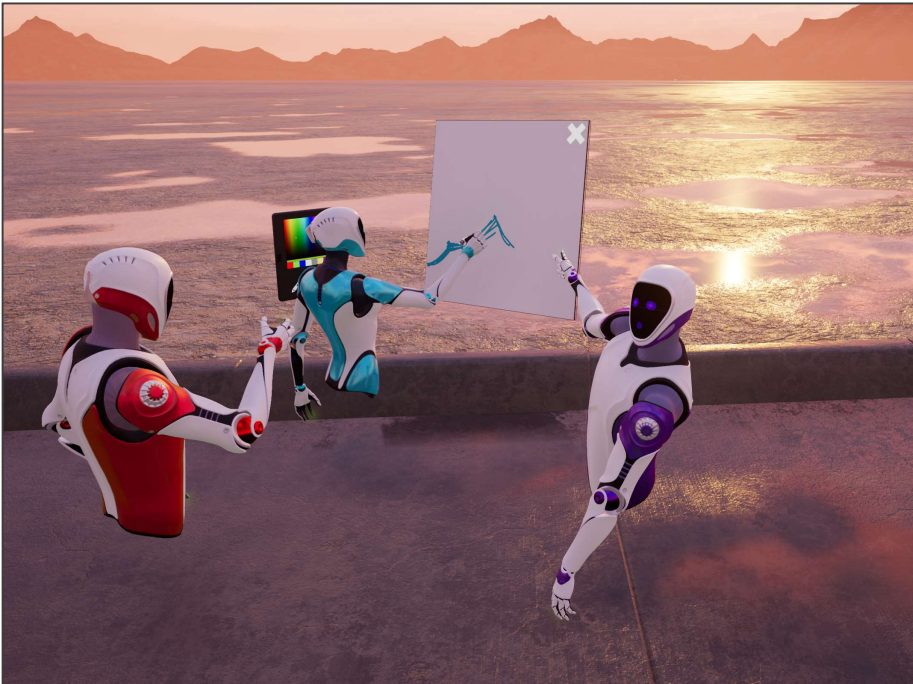


REVOLUTIONIZING THE DESIGN WORKFLOW



BRINGING A NEW LEVEL OF COLLABORATION TO VR

PHYSICAL PRESENCE



ASSET REPLICATION





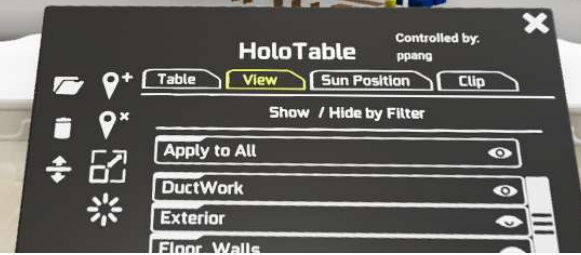
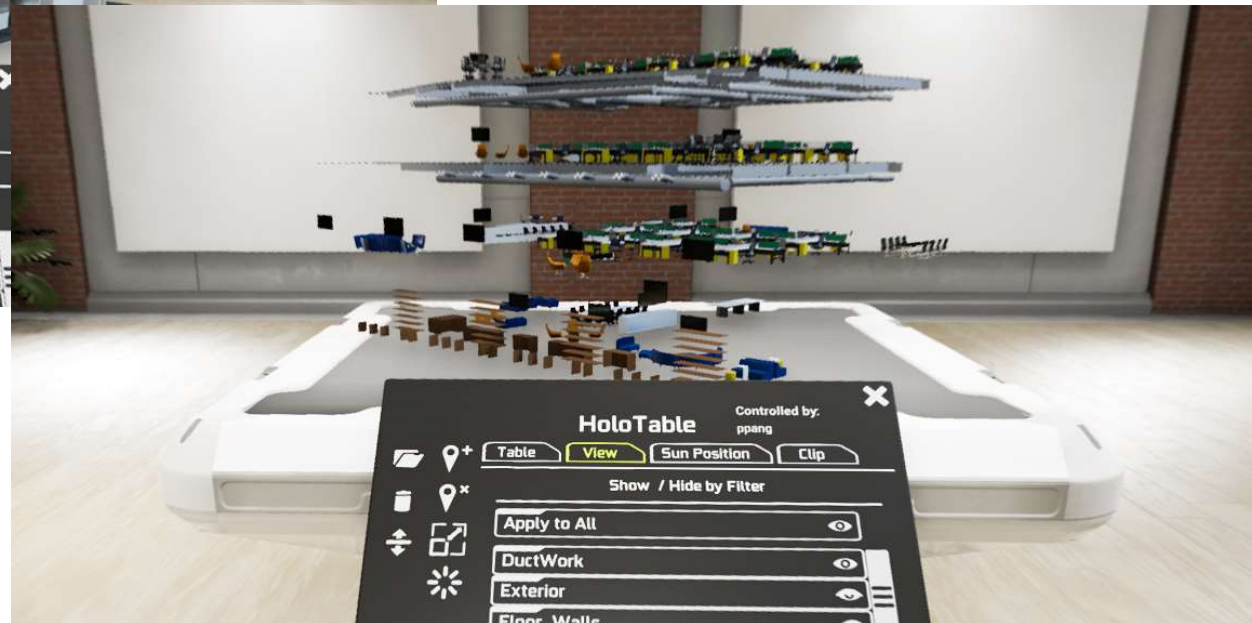


HOLODECK UPDATE

Architectural Design Review





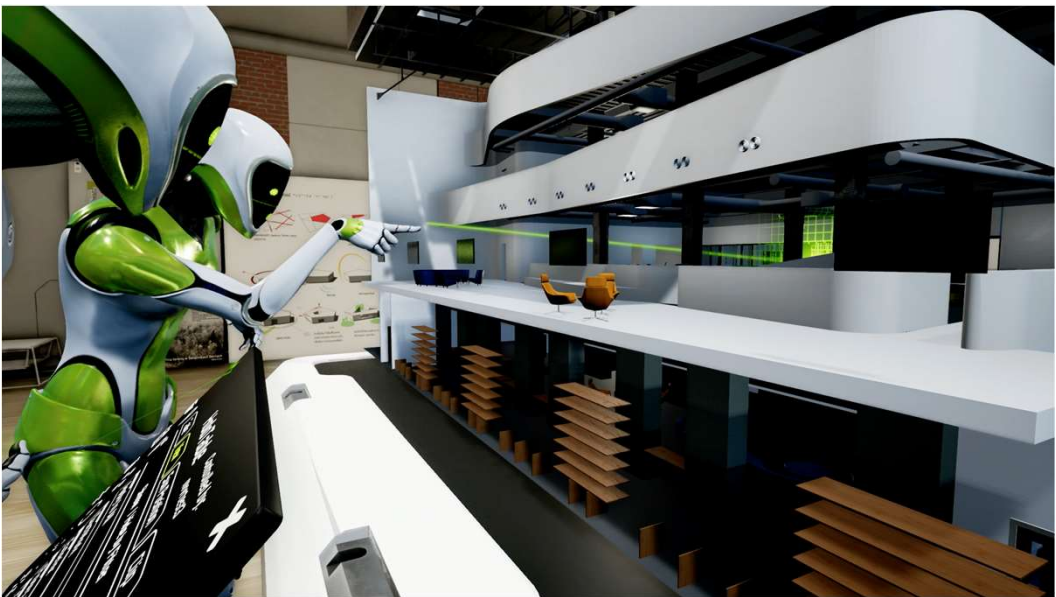






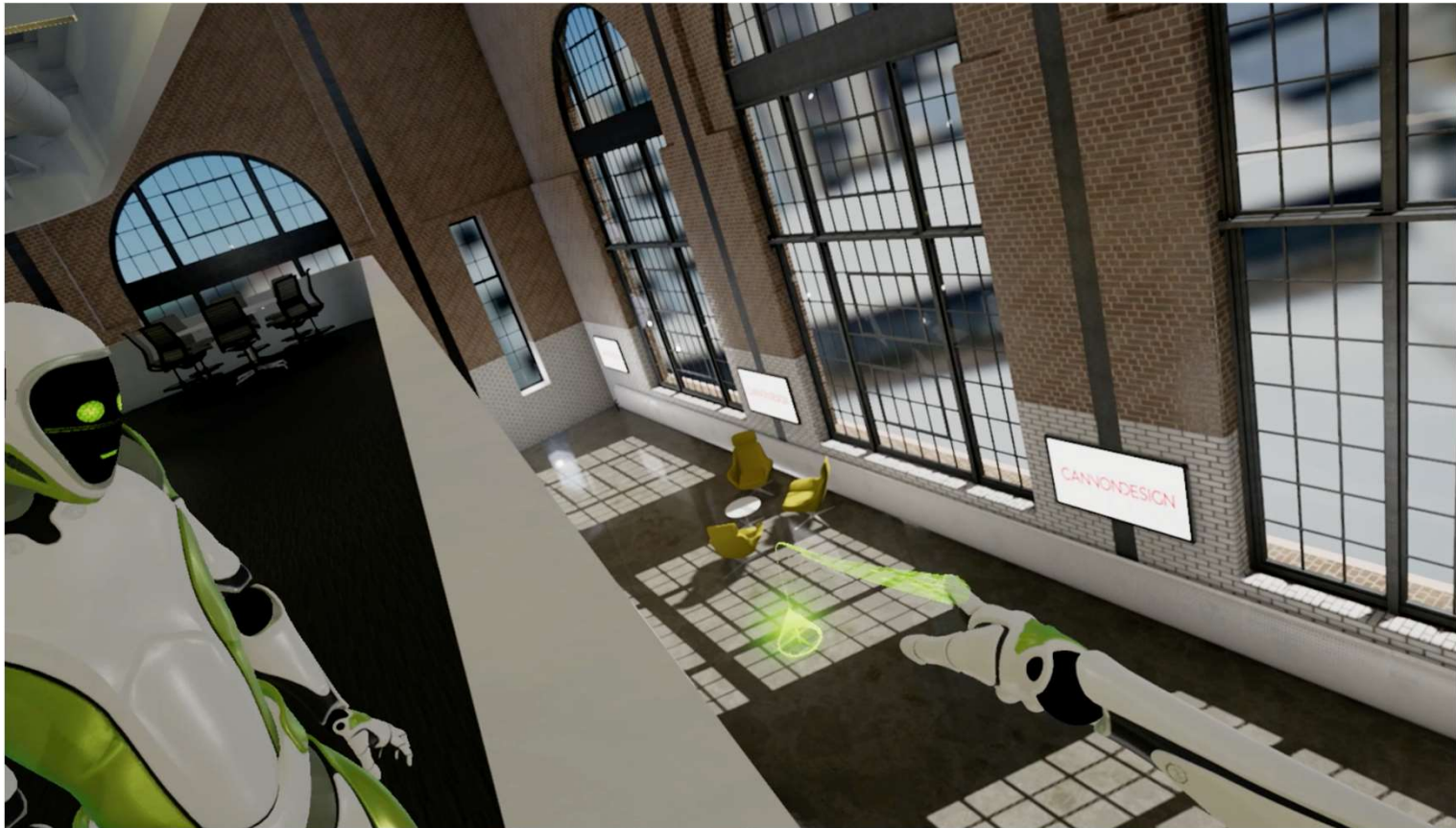
COLLABORATE ON HIGH FIDELITY MODELS

Review Design and Identify Points of Interest



EXPLORE AND REVIEW ENTIRE BUILDINGS

Teleport to Elevations



MIXING WORLDS FOR FLEXIBLE COLLABORATION

Google Hangouts and Full Web Browser in Holodeck





NVIDIA VRWORKS AUDIO

CHALLENGE

Need To Disambiguate These Cases



Elevator



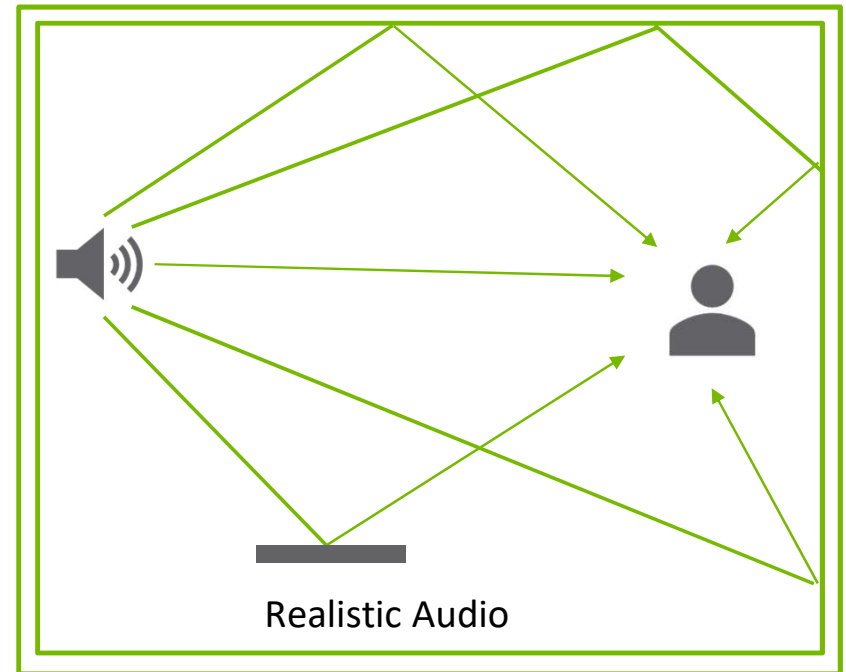
Symphony Hall



Open Space

SOLUTION

Physically-Based Audio Path Tracing



Turing Accelerated



NVIDIA HOLODECK: DESIGN LAB OF THE FUTURE

PHOTOREALISTIC GRAPHICS



INTERACTIVE PHYSICS



REAL-TIME COLLABORATION



GPU-ACCELERATED AI



EARLY ACCESS

3D Design experience
3ds Max, Maya, VISUALIZE plugins

High-end system (1080Ti, P6000, and above)
Apply at www.nvidia.com/holodeck

