



NVIDIA® NVS™
Professional Business Graphics

December 2010



History of NVIDIA® Business Graphics

2001 – 2003



Quadro NVS Launched

- *Designed & Built in collaboration with the financial community*
- *nView desktop manager launched*
- *TTM: AGP & PCI Solutions*
- *Enterprise Support Launched - 2002*

2003 – 2006



- *TTM: Win XP & Linux drivers*
- *1st PCIE based Quadro NVS*
- *1st Quadro NVS in Blades*

2006 – 2009



- *TTM: Vista Drivers*
- *Extended Taskbar support (VISTA) for Financials*
- *TTM : Win7 Drivers*

2010 -



NVIDIA NVS Brand launched

- *Stand-alone brand for Professional Business Graphics*
- *NVS ~50% of NVIDIA Professional Business*
- *Continued investment in NVS & supporting Tools*

Brand Transition

Introducing NVIDIA NVS

NVIDIA Quadro FX



Quadro =
Professional Visualization Graphics

NVIDIA Quadro NVS



NVS =
Professional Business Graphics

NVIDIA® NVS™

The Standard for Business Graphics

Enterprise Sales & Support



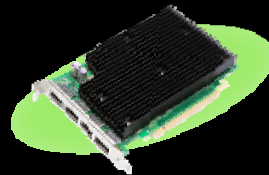
Mosaic Technology

nVIEW
Desktop Management

Installer 2.0

nvEnterprise 2.0

UDA Drivers



NVS Graphics Boards

NVIDIA NVS – The Solution for Business Graphics

Quality

- Designed and supported by NVIDIA to the highest standards

Productivity

- Low Acoustics, Energy Star, MTBF and Duty Cycle Testing for Maximum Uptime and highest Reliability

Long Life Cycle

- 24 - 36 months life cycles; driver performance and feature INCREASES over time

Continuous Investment

- NVIDIA is committed to the Business Graphics & SMB Markets and is making ongoing investments in Hardware, Software, Systems, and Industry Solutions

Usability

- Optimized Application and Usability Performance for Windows based systems



Enterprise Support

General Overview

- **Dedicated team at NVIDIA for *Enterprise Customers* in Core Software Engineering Group**
 - Help customers quickly resolve problems
 - High priority response rate (*sub-10 minute average*)
 - Help drive customer requests through engineering processes
 - ESupport tailored for personal service with immediate access to engineering resources
 - Facilitate Major Rollouts
 - Support IT specific tools such as NVManagement
 - Available (7:00 am to 5:00 pm PST and 9:00 am to 5:00 pm Central Europe)
- **Basic services offered**
 - Issue escalation
 - Case and bug submission
 - Enterprise Customer extranet sites
 - Driver drops
 - Release notes, tech docs and videos
 - Early adopter hardware/software programs



Growing Markets

TRADITIONAL MARKETS

- Finance
- Trading Floors
- Corporate Desktops
- Insurance
- Call Centers



NEW MARKETS

Traditional Markets Plus:

- Digital Signage
- Emergency Response
- Banking Centers
- Government Agencies
- Education
- Process Control
- Hospitals



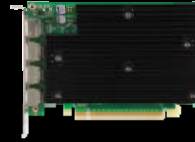
NVIDIA® NVS™

The Right Business Solution

	Target Segments	Enterprise Sales	Enterprise Support	NVIEW Support	Productivity Apps Testing	Multi Display Technology	Prof 3D Apps ISV Cert	Product Lifecycle	OEM Fulfillment	NVIDIA Warranty
NVIDIA Quadro	Workstation Professional	Yes	Yes	Yes	Yes	Mosaic	Yes	36 months	Direct	3-yr
NVIDIA NVS	Business Professional & Commercial	Yes	Yes	Yes	Yes	Mosaic	No	36 months	Direct	3-yr
NVIDIA GeForce	Consumer	No	No	No	No	Surround	No	9-12 months	Virtual	1-yr

NVIDIA Business Graphics Line-up - 2011

**NVIDIA Quadro
NVS 450**
(ATX profile PCIe x16)



Quad DisplayPort
Quad DVI-D (Single/Dual-Link)
Quad VGA

**NVIDIA Quadro
NVS 420**
(Low Profile PCIe x16 & x1)



Quad DisplayPort
Quad DVI-D (Single-Link)

New!

**NVIDIA
NVS 300**
Low Profile (PCIe x16 and x1)



Dual DVI-I(Single Link)
Dual VGA
Dual Display Port

**NVIDIA Quadro
NVS 295**
Low Profile (PCIe x16 and x1)



Dual DisplayPort
Dual DVI-D (Single/Dual Link)
Dual VGA

**NVIDIA Quadro
NVS 290**
Low Profile (PCIe x16 and x1)



Dual DVI-I(Single Link)
Dual VGA

NVIDIA® NVS™ 300

The Standard for Business Graphics

- Best in Class Display Connectivity Options
- Intelligent Power Management
- Enhanced Productivity and Flexibility in multi-display environments
- Robust Enterprise Management Tools
- Flexible Form Factor
- Improved Compatibility with Quadro Professional Graphics

25% less power*

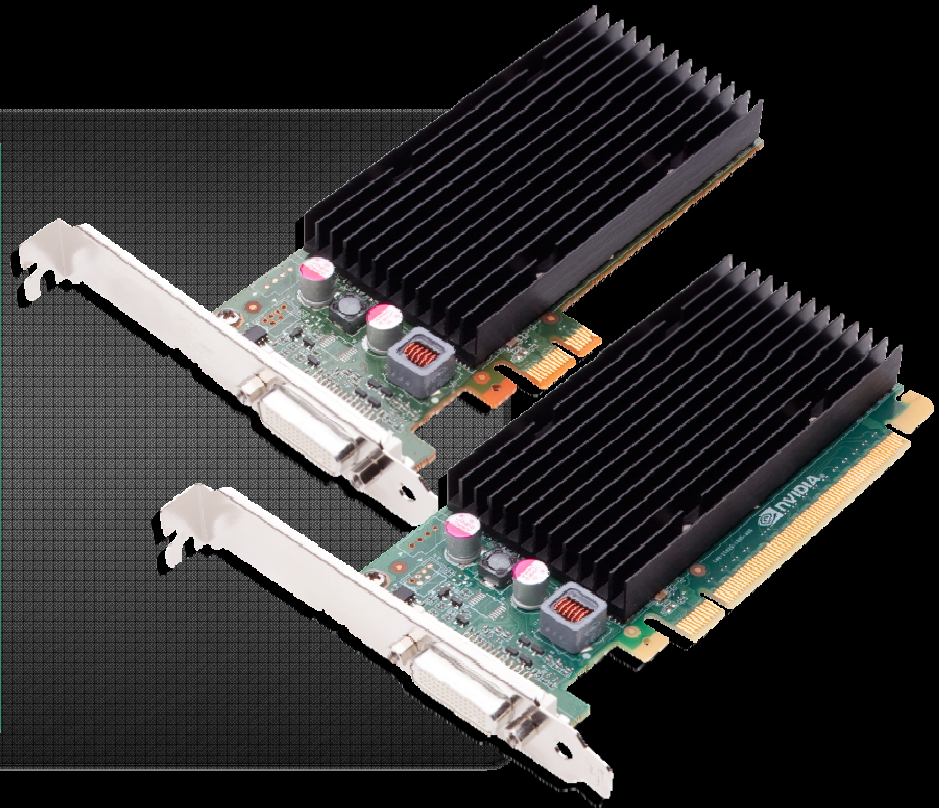


* Max Power of NVS 300 is approx. 25% less than the prev gen NVS 295

NVIDIA NVS 300

Technical Specifications

Model	NVS 300
CUDA Cores	16
Memory Size	512 MB DDR3
Memory Bandwidth	12.6 GB/s (64-bit)
Power	17.5 W
Form Factor	2.731" x 5.7" PCIE Gen2 Available in x16 or x1 PCIE
Display IO	DMS-59 (1)
Supported Displays	VGA, SL-DVI-I, DisplayPort, HDMI
Thermal	Passive (Fanless) Heatsink
Energy Star	Yes



- **Drives a wide selection of display connectors**
- **Intelligent Power Management**
- **Flexible form factor**
 - Installs into small form factors and full height systems
 - x1 and x16 Solutions

Connect to Wide Range of Displays Using Variety of DMS-59 Cables

- DMS59 to VGA
- DMS59 to DVI
- DMS59 to Display Port 
- **Seamless Upgrade for NVS 290 Based Installations**

NVIDIA NVS 300 DMS59 Connector



NVIDIA Quadro NVS 295 (PCIe x16 & x1)

- 8-core CUDA Parallel Computing Processor
- **Form Factor:**
 - Low profile; 2.731 (H)" x 6.600 (L)"
 - Single Slot – PCIe Gen 2
- **Frame Buffer:**
 - 256MB (16Mx32 GDDR3)
- **Connectors:**
 - DisplayPort + DisplayPort
 - HDMI, DVI, VGA over DisplayPort
- **Power & Cooling:**
 - 23W
 - Passive heatsink



NVIDIA Quadro NVS 290 (PCIe x16 & x1)

- 16-core CUDA Parallel Computing Processor
- **Form Factor:**
 - Low profile; 2.731 (H)" x 6.600 (L)"
 - Single Slot – PCIe Gen 2
- **Frame Buffer:**
 - 256MB (32Mx16 DDR2)
- **Connectors:**
 - DMS-59
 - Dual DVI-I & Dual VGA via DMS-59 dongles
- **Power & Cooling**
 - 21W
 - Passive heatsink



Dual NVS Generation Comparison



NVS 290



NVS 295



NVS 300

Product Features	NVS 290	NVS 295	NVS 300
PCIE Generation	Gen 1	Gen 2	Gen 2
Memory Size & Type	256MB DDR2	256MB GDDR3	512 MB DDR3
Memory Bandwidth	6.4 GB/s	11.2 GB/s	12.6 GB/s
Power	21 Watts	23 Watts	17.5 Watts
Supported Displays (Native)	SL-DVI-I VGA	Display Port	SL-DVI-I VGA Display Port (with audio)
Max Digital Display Resolution	1920x1200	2560x1600	2560x1600
HDMI Support	No	Yes	Yes
Audio Support	No	Yes (HDMI thru SPDIF only)	Yes (DP & HDMI over PCIE)

NVIDIA Quadro NVS 450 (PCIe x16)

- 2x 8-core CUDA Parallel Computing Processors

Form Factor:

- Full ATX; 4.376 (H)" x 6.600 (L)"
- Single Slot – PCIe Gen 2

Frame Buffer:

- 512MB (4pcs 32Mx32 GDDR3)

Connectors:

- 4x DisplayPort

Max Power:

- 35W

Cooling:

- Passive heatsink

Availability: Now





NVIDIA Quadro NVS 420 (PCIe x16 & x1)

- 2x 8-core CUDA Parallel Computing Processors
- **Form Factor:**
 - Low profile; 2.731 (H)" x 6.600 (L)"
 - Single Slot - PCIe Gen 2
- **Frame Buffer:**
 - 512MB (4pcs 32Mx32 GDDR3)
- **Connectors:**
 - Single VHDCI with additional dongle options
 - Single VHDCI to Quad DisplayPort
 - Single VHDCI to Quad DVI-SL (digital)
- **Max Power:**
 - 40W
- **Cooling:**
 - Active fansink (4-pin control)
- **Availability: Now**



Quad NVS Generation Comparison

Product Features	 NVS 450	 NVS 420
Form Factor	Full Height ATX Graphics card with Passive Heat sink	Low Profile Graphics Card with Active Fan sink
PCIE Generation	Gen 2	Gen 2
Memory Size & Type	512MB GDDR3	512MB GDDR3
Memory Bandwidth	11.2 GB/s	11.2 GB/s
Power	35 Watts	40 Watts
Supported Displays	DisplayPort (4) SL/DL DVI-D (4) VGA (4)	Display Port (4) SL-DVI-D (4)
Max Digital Display Resolution	2560x1600	2560x1600



**Client & Enterprise Solutions
for NVS Business Graphics**



Client and Enterprise Solutions

- **Client Solutions**

- **NVIEW Desktop Manager**
- **NVIDIA Mosaic Technology**



- **Enterprise Management Solutions**

- **Installer 2.0**
- **nvEnterprise 2.0 using WMI***



NVIEW Desktop Manager

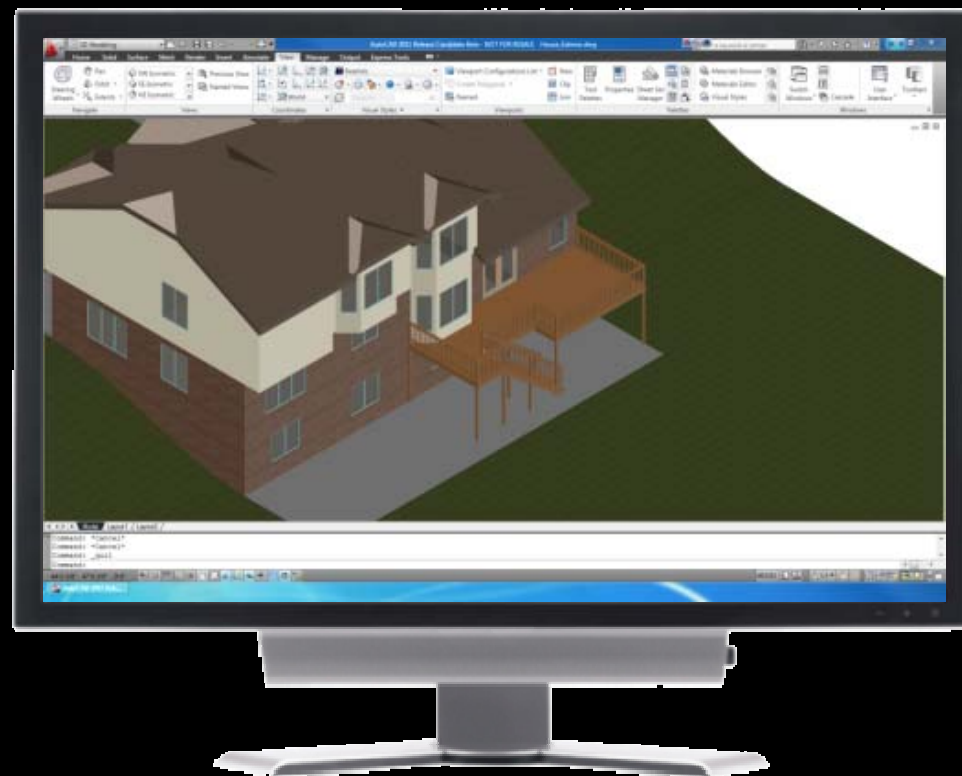
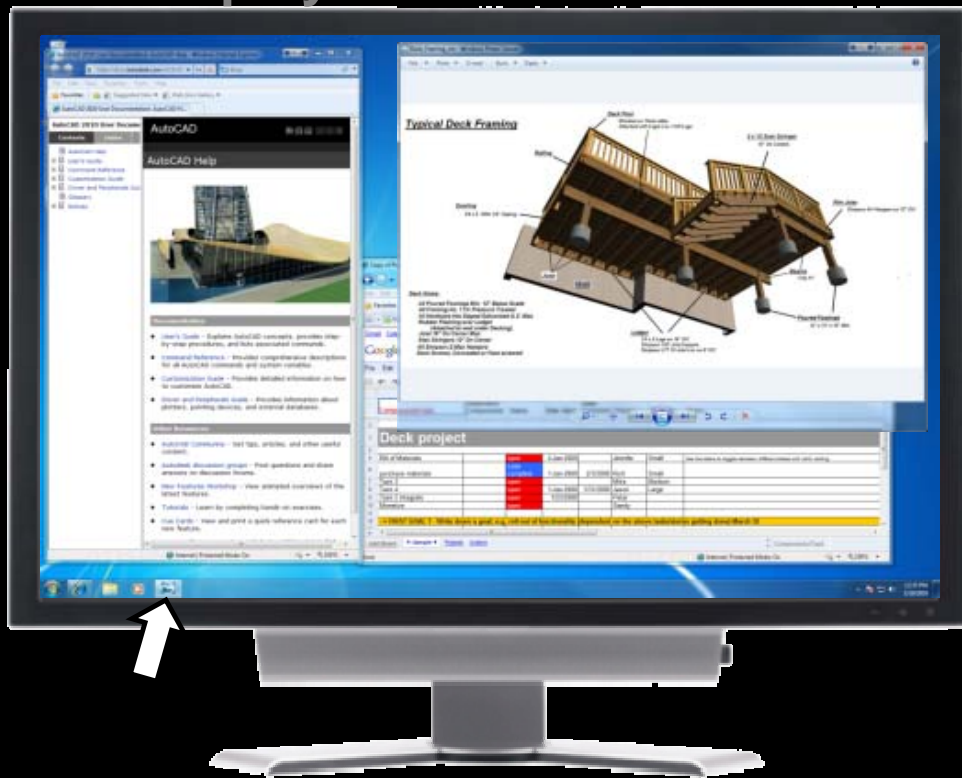
- Taskbar spanning across multiple displays
- Application/Window/Dialog Box Repositioning
- Virtual Desktops
- Display Gridlines
- nView Profiles
- and many more...



**A User-friendly Way To Manage Your
High-resolution Desktop For Increased Productivity**

Better Way to Work: NVIDIA® nView™

Eliminate clutter by extending the taskbar across multiple displays

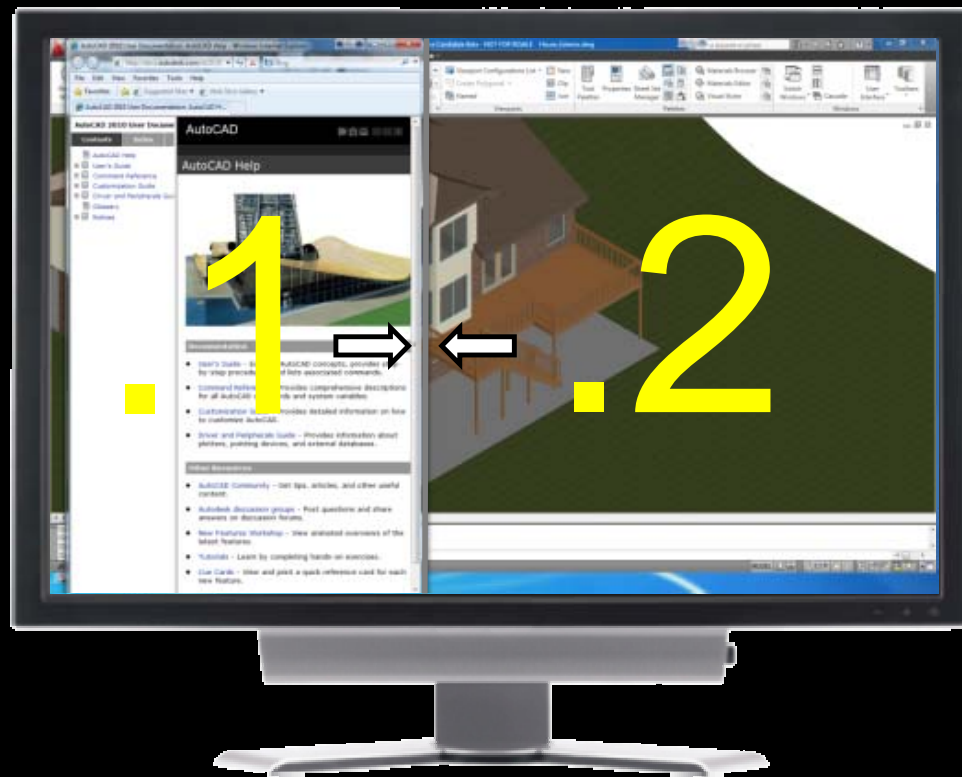
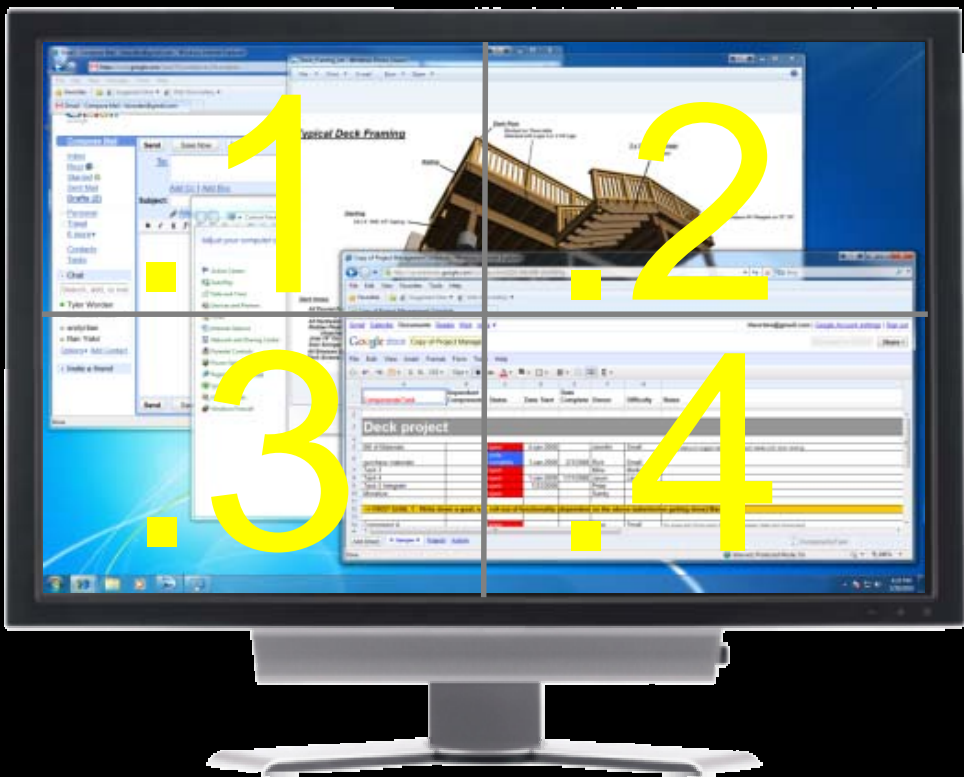


EXTENDED TASKBAR

NVIDIA Confidential

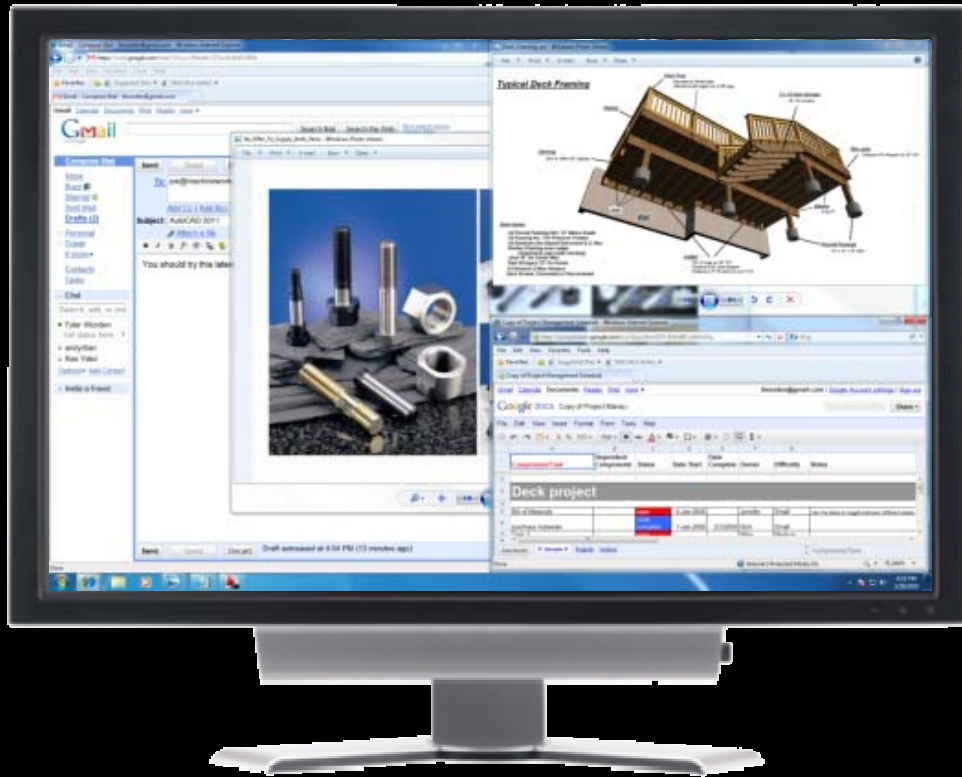
Better Way to Work: NVIDIA® nView™

Gridlines: Divide monitors into sub-screen for efficient use of screen real estate



Better Way to Work: NVIDIA® nView™

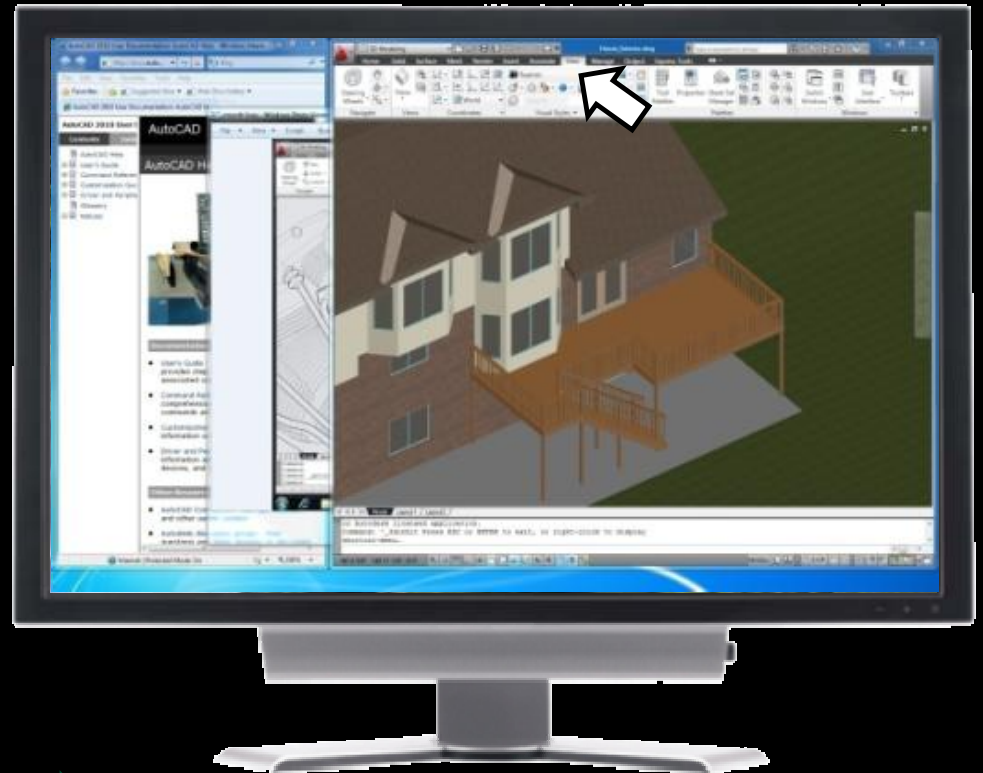
Create, customize, and switch between different desktops



1 CLUTTERED DESKTOP



NVIDIA Confidential



Multiple VIRTUAL DESKTOPS

NVIDIA® Mosaic™ Multi-Display Technology

- Unified desktop
- Seamless Image
- Up to 8 displays or projectors
- Professional Performance and Features



Multi-Display Financial Trader Desktop

Viewing more data drives better decisions



Multi Display Desktop

See everything... in context



Image courtesy of Barco

Mosaic Technology

Single Unified Desktop

✘ Without Mosaic: 4 Independent Displays



✔ With Mosaic: Single Unified Desktop & Taskbar

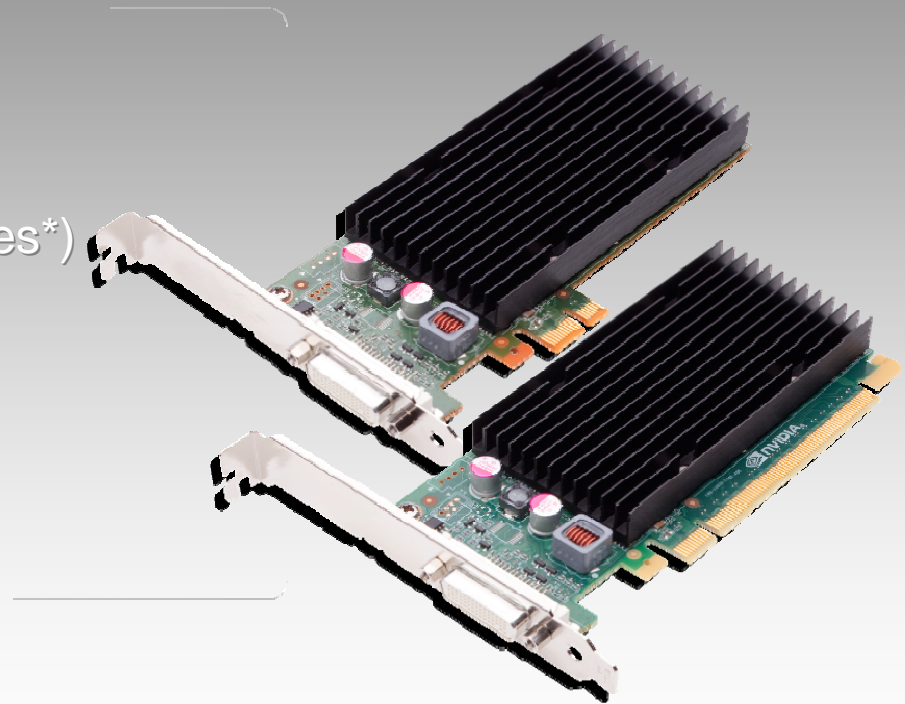


Mosaic Features

Scale with Quadro and NVS Solutions

Key Features

- Easy Configuration
- Unified Desktop (up to 8 display devices*)
- Application Spanning
- Taskbar Spanning
- Bezel Correction
- Windows 7 Support



* All displays require matching timings and resolution

Enterprise Management Tools

Installer 2.0

- Improved performance with minimal reboots
- Failure Logging
- Less Disruptive - Silent install

nvEnterprise 2.0*

- Configure graphics system (WMI)
- Save/Restore a configuration
- Graphics System Monitoring
- Display topology (modes, layout, ...)

A More Reliable Way to Work

Maximize System Uptime: NVS[®] Built By NVIDIA

Engineered, Built,
and Tested by NVIDIA



Optimized GPU
architecture and Drivers



High Reliability & Productivity



Extended Product Life Cycle



Thank You...

